

MONTHLY MEMBERSHIP PROGRESS REPORT

LOCATION PHILIPPINES

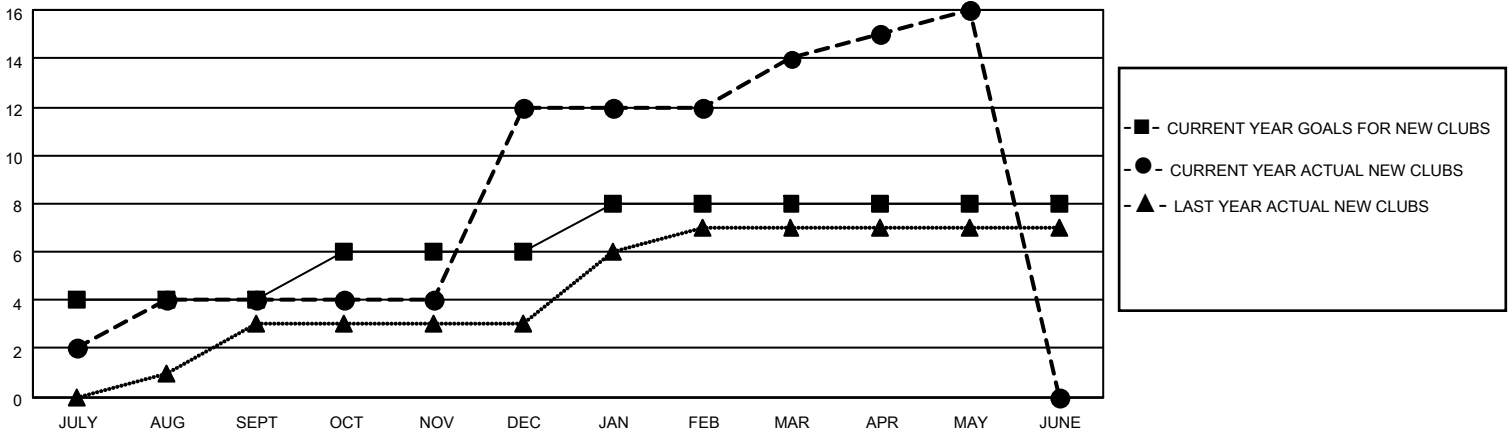
District 301A2

Results as of: 5/31/2021

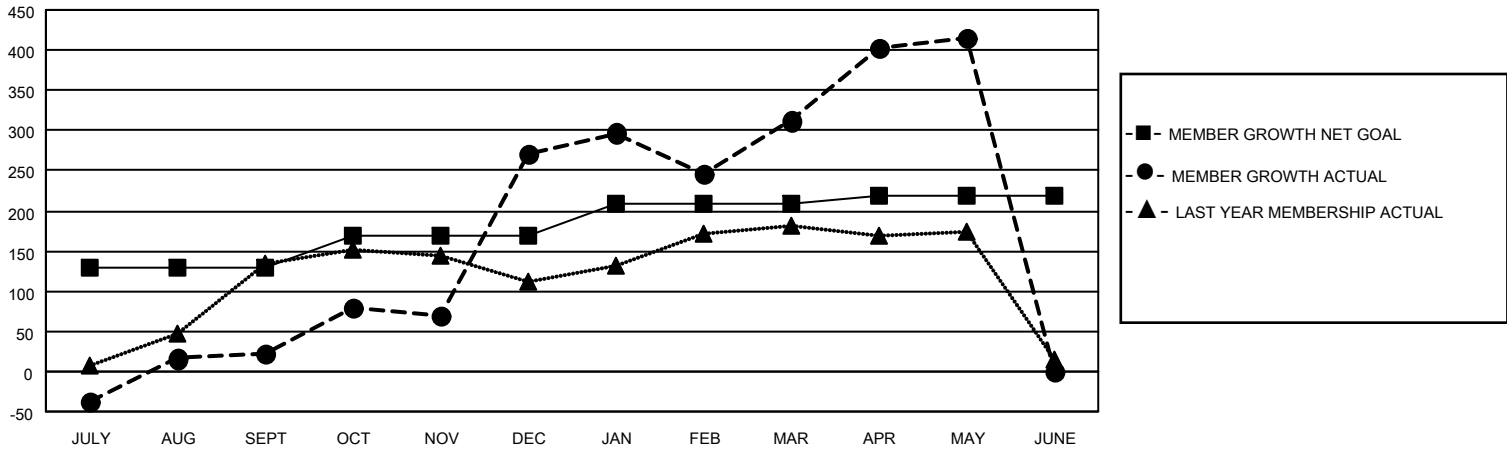
| Clubs | | | |
|-----------------------|---------------|-----------|---------------|
| RESULTS FOR 2020-2021 | | | |
| QUARTER | NEW CLUB GOAL | NEW CLUBS | DROPPED CLUBS |
| JULY/AUG/SEPT | 4 | 4 | 1 |
| OCT/NOV/DEC | 2 | 8 | 0 |
| JAN/FEB/MAR | 2 | 2 | 4 |
| APR/MAY/JUNE | 0 | 2 | 0 |

| Members | | | |
|-----------------------|------------------------|----------------------|----------------------------------------------|
| RESULTS FOR 2020-2021 | | | |
| QUARTER | MEMBER GROWTH NET GOAL | MEMBER GROWTH ACTUAL | DROPPED MEMBERS ACTUAL (including transfers) |
| JULY/AUG/SEPT | 128 | 185 | 163 |
| OCT/NOV/DEC | 40 | 395 | 141 |
| JAN/FEB/MAR | 40 | 136 | 90 |
| APR/MAY/JUNE | 10 | 156 | 48 |

GOALS AND ACTUAL NEW CLUBS CUMULATIVE



GOALS AND ACTUAL MEMBERS CUMULATIVE



| | |
|-------------------------|------------|
| DROPPED CLUBS: 5 | |
| DROPPED MEMBERS | |
| DECEASED | 29 |
| CLUB CANCELLED | 64 |
| OTHER | 349 |
| TOTAL | 442 |

76 CLUBS OF 100 ADDED 1 OR MORE NEW MEMBERS

[CLICK HERE FOR CUMULATIVE MEMBERSHIP DATA](#)

| <u>GENDER DISTRIBUTION</u> | |
|----------------------------|----------------|
| MALE | 1,677 (51.16%) |
| FEMALE | 1,601 (48.84%) |

| | |
|---------------------------------|-----|
| TOTAL FAMILY UNIT MEMBERS | 977 |
| FAMILY MEMBERS PAYING HALF DUES | 570 |